

Royal Palm Yacht & Country Club



2100 Queen Palm Road | Boca Raton, Florida



Office (561) 368-6200

www.RoyalPalm.com

Interior Estate

INTERIOR FEATURES

- Custom double wood door entry with glass detail sidelights
- Marble floor foyer entry
- Oversized crown molding in main living areas
- Two-story great room with wood floors and custom stained glass windows appointed with views of the pool and backyard
- Formal dining room with marble floors and crown molding
- Tumbled stone and marble accents throughout house
- Library with wood floors, crown molding and custom book shelves that wrap the room
- Wooden staircase with stunning stained glass window and custom iron and wood railings
- 2nd floor gallery over looks the great room with quaint seating areas and additional book shelves
- Large second-floor storage closet

GOURMET KITCHEN & LAUNDRY

- Open kitchen (remodeled in 2016) with custom wood cabinets, granite counters, glass mosaic tile back splash, stainless steel appliances, recessed lighting and an eat-in breakfast space
- Compact bar area with matching cabinets and wine storage
- Laundry room with Whirlpool washer and dryer, storage, garment rack and ironing board
- Kitchen has open flow into family room with fireplace, custom built-in, and views of the pool

MASTER SUITE & BATH

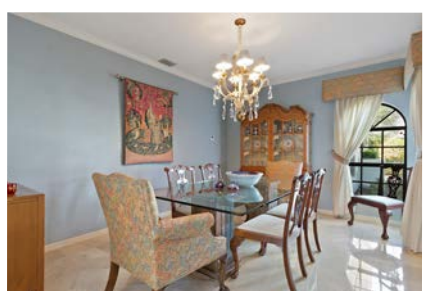
- First floor master suite with wood floors, his and her closet with custom built-ins, crown molding, and two sliding doors that access the pool
- Oversized granite and wood vanity with double sinks and make-up area, marble floors, large walk-in shower, separate jetted tub and linen closet

EXTERIOR FEATURES

- Heated pool with tile accents, paver deck and cage
- Opened and covered seating areas for entertaining
- Beautiful lush landscape provides total privacy
- Circular paver driveway

ADDITIONAL FEATURES

- Impact glass windows
- NuTone house intercom
- Finished tile floor garage with plentiful custom storage cabinets
- Barrel tile roof
- Alarm with motion sensor lights
- Freshly painted interior and exterior (2017)
- Whole-house water filtration system
- 2-zone air conditioning



Presented Exclusively By

David W. Roberts - Broker/Owner



Office (561) 368-6200

www.RoyalPalm.com

The only real estate firm dedicated exclusively to Royal Palm Yacht & Country Club

2100 Queen Palm Road



CORNER LOT



Second Floor



 Interior Estate	
BEDROOMS	4
BATHROOMS	4.1
YEAR BUILT	1987
LOT SIZE	101' X 126' X 81' X 125'
LIVING SQ. FT.	3,784 SQ. FT.
TOTAL SQ. FT.	4,564 SQ. FT.
GARAGES	2

NOTE: All measurements, features and specifications are approximate. The accuracy of this information is subject to errors, omissions and changes. An architect should be contacted for actual measurements, features and specifications. Not intended to solicit another Broker's listing. Royal Palm Properties, Licensed Real Estate Brokers.