

Royal Palm Yacht & Country Club



229 South Maya Palm Drive | Boca Raton, Florida



Office (561) 368-6200

www.RoyalPalm.com

Interior Estate

INTERIOR FEATURES

- Updated Modern 3-bedroom plus loft home with an extraordinary open floor plan
- White Porcelain tile and custom moldings throughout all main living spaces
- Foyer entry with decorative glass surround and recessed lighting
- Formal dining room with a fluted ceiling, feature wall, and sliding glass doors
- Office space with custom built-ins, and solid counters
- Wet bar with U-Line chilled bottle storage and wine refrigerator, sink storage, and 3-seat pub table
- Formal living room with exposed vaulted wood beam ceilings, fireplace, custom suspension lighting, and sliding glass doors to pool and lanai
- Family room with fluted ceilings, custom media storage and feature wall, and recessed lighting
- Second-floor loft-style living room with exposed beam and wood ceilings with large windows
- Second-floor sitting area/reading nook

GOURMET KITCHEN & LAUNDRY

- Renovated spacious kitchen with custom wood cabinets, solid stone counters and backsplash, and writing desk.
- Stainless steel appliances include Sub-Zero Refrigerator, Thermador wall mounted double ovens, Miele electric cook top, and Fisher & Paykel stacked dishwasher
- Large center island with storage, power and suspended stainless steel hood
- Separate breakfast dining space with custom pendant lighting, mounted TV, and surrounding tropical views views
- Laundry room with Fisher & Paykel washer and dryer, sink, and ample wood cabinet storage

MASTER SUITE & BATH

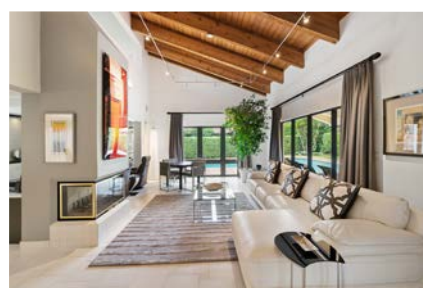
- Spacious master suite with exposed beam and wood ceilings, seating area, and beautiful garden views
- Large separate his and hers walk-in closets
- Additional built-in storage unit in the master suite
- Beautifully renovated master bath with separate his and her vanities (hers with a make-up area), fully tiled floors and walls, large frameless glass shower, sculpted soaking tub, and a Neorest commode

EXTERIOR FEATURES

- Large heated pool with spa with brick and tile pool deck
- Screened in lanai with dining space perfect for entertaining
- Open and covered sunning and entertaining spaces
- Large yard with dense privacy hedge
- Professionally installed and maintained landscape and lighting
- Painted brick driveways and walkways
- Tiled atrium located adjacent to the front door

ADDITIONAL FEATURES

- Tile roof
- 2-Car garage with two additional parking areas
- ADT security alarm with motion sensors and lights
- Impact glass doors and windows
- 2-Zone air conditioning



Presented Exclusively By

David W. Roberts - Broker/Owner

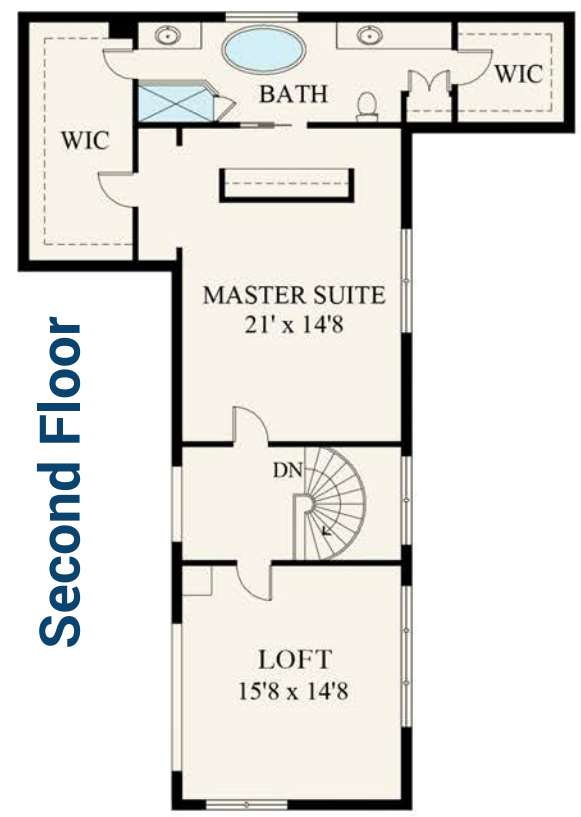


Office (561) 368-6200

www.RoyalPalm.com

The only real estate firm dedicated exclusively to Royal Palm Yacht & Country Club

229 South Maya Palm Drive



 Interior Estate	
BEDROOMS	3 + LOFT
BATHROOMS	3.1
YEAR BUILT	1978
LOT SIZE	74' X 129' X 112' X 123'
LIVING SQ. FT.	3,892 SQ. FT.
TOTAL SQ. FT.	4,847 SQ. FT.
GARAGES	2

NOTE: All measurements, features and specifications are approximate. The accuracy of this information is subject to errors, omissions and changes. An architect should be contacted for actual measurements, features and specifications. Not intended to solicit another Broker's listing. Royal Palm Properties, Licensed Real Estate Brokers.