

# Royal Palm Yacht & Country Club



1220 Thatch Palm Drive | Boca Raton, Florida



Office (561) 368-6200

P R O P E R T I E S

[www.RoyalPalm.com](http://www.RoyalPalm.com)

## Golf Course Home

### INTERIOR FEATURES

- Single story home with 3 bedrooms and 2 bathrooms
- Marble flooring throughout main living areas
- Double glass door foyer entry
- Formal living/dining room
- 3rd bedroom used as an office with built-ins
- Family room with gas fireplace
- Storage closets throughout
- Speakers throughout

### KITCHEN & LAUNDRY

- Custom cabinets with granite counters
- Kitchen Aid appliances
- Sliding door and window leading to covered patio and outside bar area
- Laundry area in garage with sink tub and extra cabinet storage

### MASTER SUITE & BATH

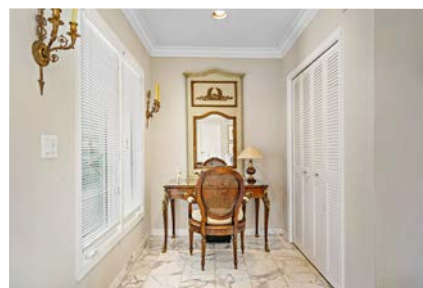
- Spacious master suite with wood flooring and walk-in closet
- Master bath with shower/tub and vanity
- Overlooks golf course with sliding door leading to covered patio

### EXTERIOR FEATURES

- Two car garage with front circular driveway
- Covered patio overlooking the 16th and 8th fairways on the Jack Nicklaus Signature golf course
- Well landscaped lawn with room for a pool
- Single zone air conditioning
- Flat cement tile roof

### COMMUNITY FEATURES

- 24 Hour Security
- Jack Nicklaus Signature golf course
- World class yachting facility
- Conveniently located, minutes to downtown Mizner Park and walking distance to the beach and Boca Resort and Club
- Royal Palm Yacht & Country Club is the most sought-after community in all South Florida Since 1959



Presented Exclusively By

David W. Roberts - Broker/Owner



P R O P E R T I E S

Office (561) 368-6200

[www.RoyalPalm.com](http://www.RoyalPalm.com)

The only real estate firm dedicated exclusively to Royal Palm Yacht & Country Club

**1220 Thatch Palm Drive**



 <b>Golf Course Home</b>	
BEDROOMS	3
BATHROOMS	2
YEAR BUILT	1969
LOT SIZE	105' X 100' X 86' X 103'
LIVING SQ. FT.	2,082 SQ. FT.
TOTAL SQ. FT.	2,915 SQ. FT.
GARAGES	2

NOTE: All measurements, features and specifications are approximate. The accuracy of this information is subject to errors, omissions and changes. An architect should be contacted for actual measurements, features and specifications. Not intended to solicit another Broker's listing. Royal Palm Properties, Licensed Real Estate Brokers.