

Royal Palm Yacht & Country Club



1857 Sabal Palm Circle | Boca Raton, Florida



Office (561) 368-6200

www.RoyalPalm.com

Interior Estate

SIGNATURE ESTATE BY SRD BUILDING CORP.

www.RoyalPalm.com

INTERIOR FEATURES

- Modern, inviting, clean line design with open floor plan
- Engineered European oak wood flooring throughout
- Foyer atrium entry with two-story floor to ceiling glass walls, custom finished wrap ceiling detail, bronze aluminum and glass entry door, natural gas fire feature
- Quality upgrades including Crestron smart home, custom 8' high 2" thick solid wood interior doors with concealed hinges and doorstops, recessed reglet baseboards and casing, linear diffusers at select locations, zero-entry showers and square LED hi-hats
- Library/Den with His/Her desk and floating lit shelving
- Living room/great room with elegant quartz wall, linear fireplace and vertical channel ceiling detail that continues through to the Summer Room
- Club room and media room with playfully designed silver wave marble club bar, corner window and floating lucite lit shelves, motorized shades, Uline refrigerator/ice maker
- Temperature controlled glass-walled wine room with metal wine racks and 528 bottle capacity
- Highly desirable center spine steel staircase with oak treads, clear glass railing and metal handrail
- Upstairs loft area with oak wood floors and sleek floating entertainment unit
- Elevator with upgraded finishes and wood/mirror paneled walls

GOURMET KITCHEN & LAUNDRY

- Custom, European styled, flat slab high gloss white cabinets with imported white Calacatta porcelain tops, and two center islands with seating
- Stainless steel Wolfe appliances including double wall oven, cook-top, microwave and warming drawers, Thermador refrigerator/freezer, refrigerator drawer, and two Bosch dishwashers
- Open kitchen design leading to the 3-sided glass-walled dining room which seats 10 and overlooks the resort style pool area
- 2nd-floor laundry room with custom high gloss white cabinets and highly durable engineered quartz counters, storage, drip dry area, sink and Electrolux washer & dryer

MASTER SUITE & BATH

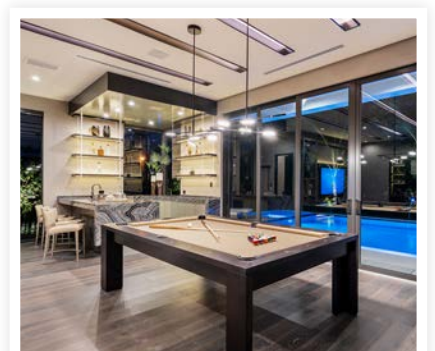
- Luxurious second-floor master suite with morning bar and 15" Uline refrigerator, inviting sitting area and access to two balconies with sliding glass doors overlooking the pool area
- Separate His and Her master baths with custom high gloss floating cabinets, engineered marble white counters and Zebrino marble floors
- Huge His and Her walk-in closets with floor to ceiling lit shelving and wardrobe racks

EXTERIOR FEATURES

- Modern concrete and artificial turf driveway, 3-car garage with superior performance hurricane rated bronze aluminum and frosted glass hi-lift garage doors
- Privacy landscaping enclosing the perimeter of the estate
- Custom made horizontally lined exterior aluminum railings
- Spacious and private backyard with generous covered space, summer kitchen, and a hammered copper fire pit
- Salt chlorine pool with white gem finish, tanning ledge, colored lights, fountain jets, negative edge spa, outdoor shower, and natural gas heater
- Bianco white porcelain tiled patio surrounded by tropical landscaping, lounge seating, and quality artificial turf
- Covered loggia and summer kitchen perfect for entertaining with built-in cabinetry, durable engineered marble counters, ceiling mounted TV, fire pit, 36" Alfresco natural gas grill, Uline refrigerator, sink, dining and bar seating

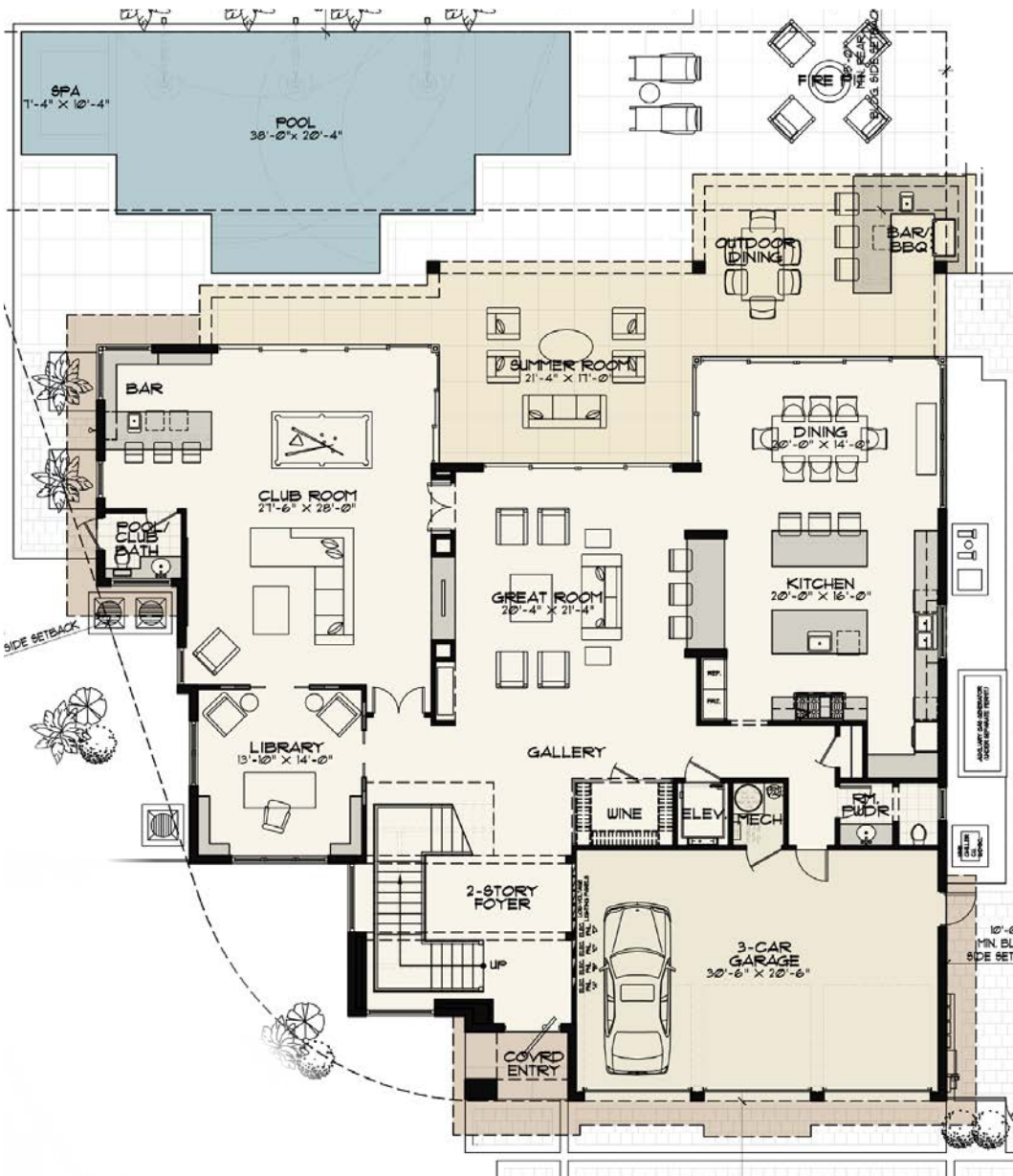
ADDITIONAL FEATURES

- Vantage upgraded lighting system with new architectural backlit lighting keypads
- Smart house Crestron control panels for the pool, music, lights, cameras, climate, security and more
- 4-Zone high-efficiency air-conditioners with programmable thermostats, linear diffusers in select locations and ultra-quiet bath exhausts
- Natural gas installed for cook-top, pool heater, grill, water heater, generator, fireplace, fire pit, fire table, and entry fire feature
- Exterior entry with natural gas fire feature and porcelain veneered walls
- Top of the line open and closed cell foam insulation and sound insulation installed at walls and ceilings
- Air-conditioned AV closet/electronic room with a custom racking system
- First floor prewired for motorized window treatments controlled with Crestron system
- Motorized window treatments installed in the Club Room, Master Bedroom and Master Baths
- Full house natural gas generator
- Central vacuum

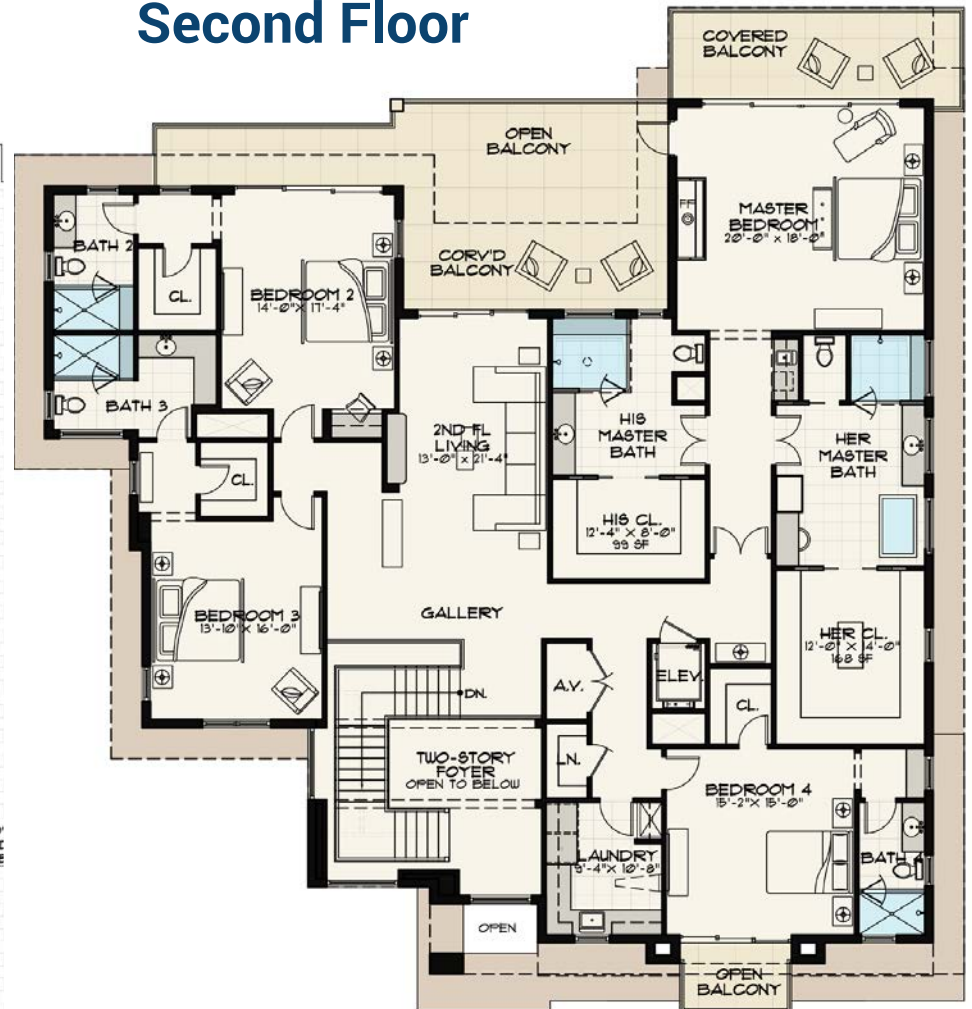


The only real estate firm dedicated exclusively to Royal Palm Yacht & Country Club

1857 Sabal Palm Circle



Second Floor



Interior Estate

SIGNATURE ESTATE BY SRD BUILDING CORP.

BEDROOMS	4
BATHROOMS	5.2
YEAR BUILT	2019
LOT SIZE	105' X 95' X 121' X 125'
LIVING SQ. FT.	6,203 SQ. FT.
TOTAL SQ. FT.	8,264 SQ. FT.
GARAGES	3