

Royal Palm Yacht & Country Club



298 Key Palm Road | Boca Raton, Florida



Office (561) 368-6200

P R O P E R T I E S

www.RoyalPalm.com

Waterfront Estate

INTERIOR FEATURES

- 13' hand-carved oak front door with glass transom
- Grand two-story foyer entry with 22' dome ceiling and custom glass chandelier
- Volume ceilings, oversized moldings throughout
- Coquina floor throughout first-floor living areas
- Spacious formal living with decorative wood columns, two-story wall of windows with three sets of French doors opening to the pool deck
- Formal dining room with lux wallpapers, and a pair of French doors opening to a private dining patio
- Office/Library with hand-carved coffered ceilings, wood floors, mounted TV, and custom wood built-ins with doors leading to a private courtyard
- Bright family room with Pecky Cypress ceiling and beams, two-story bay windows with plantation shutters, built-in media center, open flow into the kitchen for easy entertaining, and views of the pool and water
- Club Room with an over-lit tray ceiling, custom wood trim, plank-tile floors, fully equipped bar with sink and wine refrigerator, billiards table, and full bathroom with large sauna and double vanity
- Massage room/Gym with mounted TV
- First and second-floor dens with gas fireplaces
- Second-floor loft with built-in media station and French doors to a covered balcony
- Separate staff quarters above garage with kitchenette, bedroom, closet, and full bath
- Elevator

GOURMET KITCHEN & LAUNDRY

- Open kitchen with custom wood and patina mirror cabinets, white quartz counters, two sinks, a large center island, white and stainless steel feature hood, and two built-in writing desks
- Appliances include: SubZero refrigerator, gas Wolf six-burner range with griddle, two Miele dishwashers, ice maker, and additional beverage refrigerator
- Center Island has matching counters, counter-height seating, a vegetable sink, power, and storage
- Servery located adjacent to kitchen and next to the temperature controlled wine fridge, with additional sink, dishwasher, and several cabinets for storage
- Laundry room with one washing machine and two dryers, sink, drip station, SubZero refrigerator, and storage

MASTER SUITE & BATH

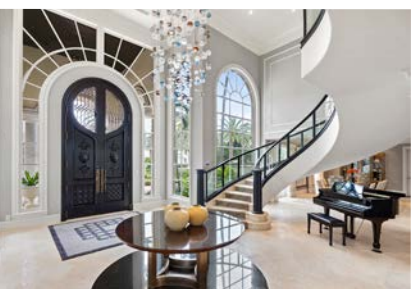
- 2,000+ sq. ft. second-floor master suite with over-lit tray ceilings, large seating area, surround sound speakers, hardwood floors, private office, and access to the wrap-around terrace with spectacular water views
- Spa-like master bath with enormous steam shower with rainfall fixtures, body jets and marble surfaces, marble floors, three vanities plus a make-up area, skylight, separate jetted soaking tub, and private water closets
- Separate large his and her master designer closets with custom built-ins, wardrobe ladder, and hardware. Her closet has a hidden panic room with telephone

EXTERIOR FEATURES

- Waterfront home on a trophy double lot with south exposure
- Resort-style terrace with heated pool, spa, and separate heated lap pool
- Covered loggia with seating and dining space, ceiling fan, outdoor speakers and waterfront views
- Summer Kitchen with Prosear outdoor BBQ, refrigerator, sink, and storage
- Fenced tennis court with lighting, basketball hoops, and viewing gazebo
- Multiple open and covered seating areas
- Outdoor shower
- Tropical landscape, outdoor lighting, and irrigation professionally designed and installed
- Gated stone circular driveway and walkways
- Equipped dock with boat lift over a deep-water canal
- Loft storage located over the garage

ADDITIONAL FEATURES

- 4-car air conditioned garage plus golf cart
- Barrel tile roof
- 7-zone air conditioning
- Honeywell digital thermostat
- ADT security system with cameras, and motion sensors
- Whole house natural gas generator
- Speaker and lighting system throughout the entire house with mobile and tablet control
- Linear diffused air vents
- Central vacuum



Presented Exclusively By

David W. Roberts - Broker/Owner



P R O P E R T I E S

Office (561) 368-6200

www.RoyalPalm.com

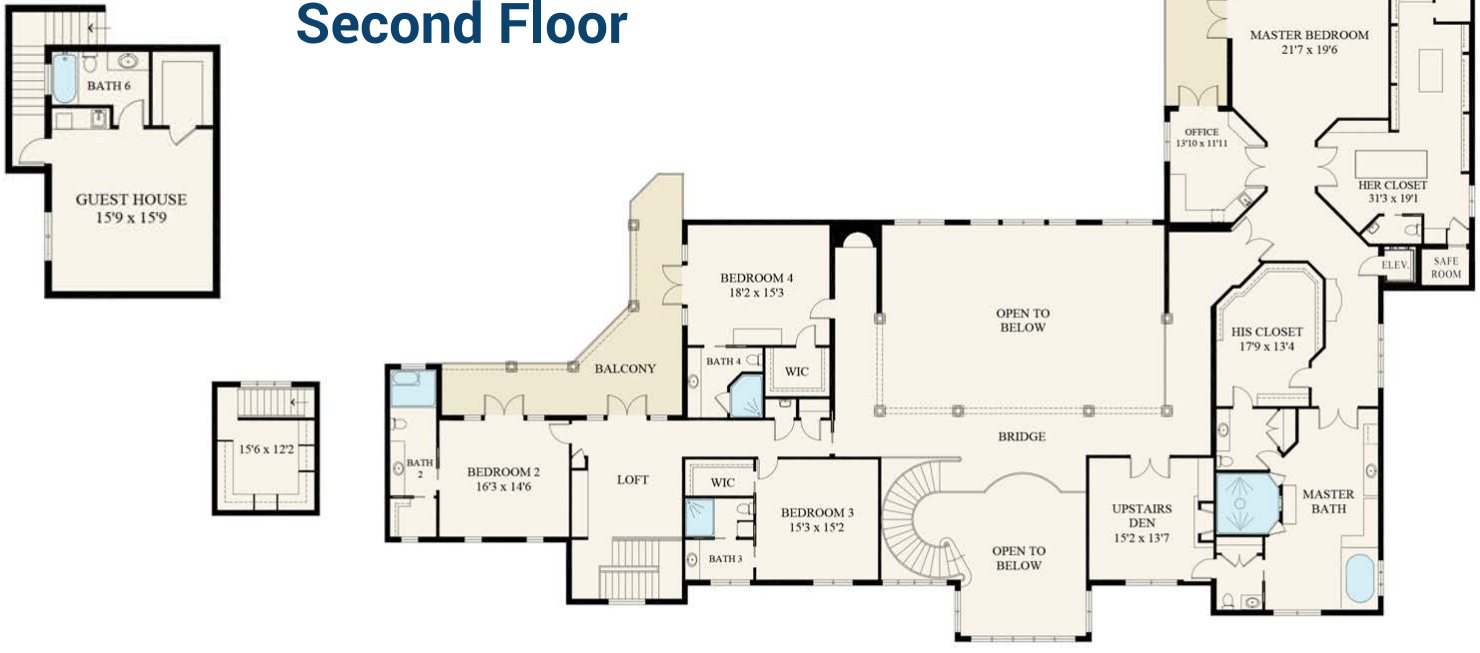
The only real estate firm dedicated exclusively to Royal Palm Yacht & Country Club

298 Key Palm Road

First Floor



Second Floor



 Waterfront Estate <small>TROPHY DOUBLE LOT</small>	
BEDROOMS	6
BATHROOMS	8 FULL & 2 HALF
YEAR BUILT	1972
LOT SIZE	188' X 199' X 288' X 155'
LIVING SQ. FT.	12,354 SQ. FT.
TOTAL SQ. FT.	16,062 SQ. FT.
GARAGES	4.5

NOTE: All measurements, features and specifications are approximate. The accuracy of this information is subject to errors, omissions and changes. An architect should be contacted for actual measurements, features and specifications. Not intended to solicit another Broker's listing. Royal Palm Properties, Licensed Real Estate Brokers.