

Royal Palm Yacht & Country Club



2100 Queen Palm Road | Boca Raton, Florida



Office (561) 368-6200

www.RoyalPalm.com

Interior Estate

INTERIOR FEATURES

- Custom double wood door entry with glass detail sidelights
- Oversized crown molding in main living areas
- Two-story living room with feature wall and appointed views of the pool and backyard
- Formal dining room with crown molding
- Library with carpeting, crown molding, and custom book shelves wrapping the room
- Wooden stairway with custom iron and wood hand railings
- Family room has wood burning fireplace and sliding doors opening to the pool area
- 2nd floor gallery over looks the great room with quaint seating areas
- Large second-floor storage closet

GOURMET KITCHEN & LAUNDRY

- Open kitchen (remodeled in 2018) with custom wood cabinets, marble counters, stainless steel appliances, recessed lighting and an eat-in breakfast dining space
- Kitchen has open flow into family room for easy entertaining
- Laundry room with Whirlpool washer and dryer, storage, garment rack and ironing board

MASTER SUITE & BATH

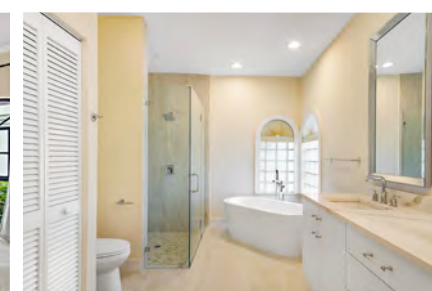
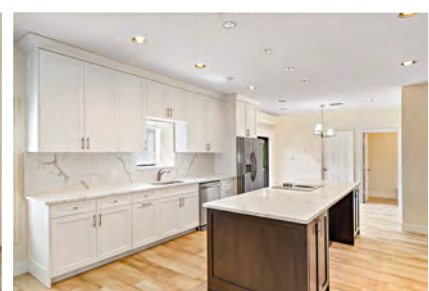
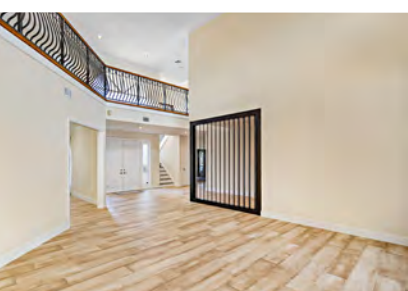
- First floor master suite featuring His & Her closets, crown molding, and two sliding doors that access the pool
- Spacious master bathroom has a marble and wood vanity with double sinks and make-up area, marble floors, large walk-in shower, separate soaking tub, and linen closet

EXTERIOR FEATURES

- Heated pool with tile accents and marble deck
- Opened and covered seating areas for entertaining
- Beautiful lush landscape provides total privacy
- Circular paver driveway

ADDITIONAL FEATURES

- Impact glass windows
- Finished tile floor garage with plentiful custom storage cabinets
- Barrel tile roof (2019)
- Alarm with motion sensor lights
- Freshly painted interior and exterior (2018)
- Whole-house water filtration system
- 2-zone air conditioning



Presented Exclusively By

David W. Roberts - Broker/Owner



Office (561) 368-6200

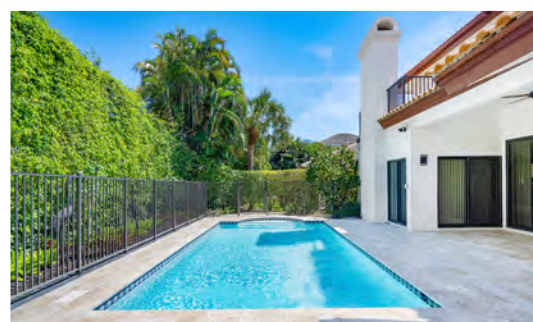
www.RoyalPalm.com

The only real estate firm dedicated exclusively to Royal Palm Yacht & Country Club

2100 Queen Palm Road



Second Floor



|  Interior Estate | |
|--|---------------------------------|
| BEDROOMS | 4 |
| BATHROOMS | 4.1 |
| YEAR BUILT | 1987 |
| LOT SIZE | 101' X 126' X 81' X 125' |
| LIVING SQ. FT. | 3,784 SQ. FT. |
| TOTAL SQ. FT. | 4,564 SQ. FT. |
| GARAGES | 2 |

NOTE: All measurements, features and specifications are approximate. The accuracy of this information is subject to errors, omissions and changes. An architect should be contacted for actual measurements, features and specifications. Not intended to solicit another Broker's listing. Royal Palm Properties, Licensed Real Estate Brokers.