

# Royal Palm Yacht & Country Club



2380 Date Palm Road | Boca Raton, Florida



Office (561) 368-6200

[www.RoyalPalm.com](http://www.RoyalPalm.com)

## Interior Estate

### INTERIOR FEATURES

- Solid double wood door entry with inset windows
- Foyer entry with decorative wainscot
- Walnut hardwood flooring in all main living areas, carpeted bedrooms, and white plantation shutters throughout the home
- Crown and cove ceiling moldings throughout
- Formal living room with large bay window and custom corner wood built-ins
- Formal dining room with picture frame molding, chandelier, and French doors opening to the pool
- Family room opens to the kitchen and features surround sound speakers and electric window shades

### GOURMET KITCHEN & LAUNDRY

- Spacious white and bright kitchen with granite counters, white subway tile backsplash, large island, snack bar window to the pool, and food pantry
- Large center island with counter-height seating, storage, and designer chandelier
- Stainless steel appliances include Bosch and GE Monogram induction cooktop
- Separate breakfast dining area
- Laundry room has an LG washer & dryer, garment rack, Kitchen-Aid refrigerator, tile floors, sink, and cabana door

### MASTER SUITE & BATH

- Spacious master suite with sitting area, crown molding, ceiling fan, carpeting, and French doors opening to the covered porch and pool deck
- Master bath has a double vanity plus make-up vanity, frameless glass walk-in shower with dual shower heads, linen closet, and a water closet
- Large walk-in closet with custom wood built-ins, storage, and lighting

### EXTERIOR FEATURES

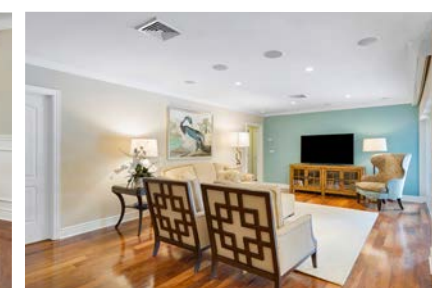
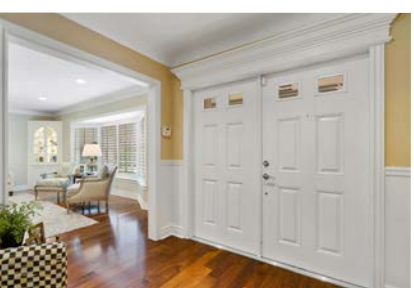
- Heated pool with large sun shelf, raised spa with spill-over, and marble deck
- Gated backyard lined with manicured mature landscaping ensuring privacy
- Covered summer room with a seating area, dining area, speakers, wood ceilings, and mounted TV
- Stacked slate stone with stainless steel fire feature
- Built-in Weber stainless steel BBQ with granite counters
- Weather & heat resistant concrete roof tiles
- Gated circular driveway and walkways with marble pavers

### ADDITIONAL FEATURES

- 2-car garage with tile flooring and built-in storage
- Impact glass windows and sliders
- 2-zone air conditioning
- Perfectly Clear water filtration system
- 2 tankless water heaters

### COMMUNITY FEATURES

- 24-Hour Security
- Jack Nicklaus Signature golf course
- World class yachting facility
- Conveniently located, minutes to downtown Mizner Park and walking distance to the beach and Boca Resort & Club
- Royal Palm Yacht & Country Club is the most sought-after community in all South Florida since 1959



Presented Exclusively By

David W. Roberts - Broker/Owner



Office (561) 368-6200

[www.RoyalPalm.com](http://www.RoyalPalm.com)

The only real estate firm dedicated exclusively to Royal Palm Yacht & Country Club

**2380 Date Palm Road**



 <span style="font-size: 1.2em; font-weight: bold; margin-left: 10px;">Interior Estate</span>	
<b>BEDROOMS</b>	<b>4</b>
<b>BATHROOMS</b>	<b>3</b>
<b>YEAR BUILT</b>	<b>1969</b>
<b>LOT SIZE</b>	<b>90' X 125' X 86' X 125'</b>
<b>LIVING SQ. FT.</b>	<b>2,722 SQ. FT.</b>
<b>TOTAL SQ. FT.</b>	<b>4,127 SQ. FT.</b>
<b>GARAGES</b>	<b>2</b>

NOTE: All measurements, features and specifications are approximate. The accuracy of this information is subject to errors, omissions and changes. An architect should be contacted for actual measurements, features and specifications. Not intended to solicit another Broker's listing. Royal Palm Properties, Licensed Real Estate Brokers.