

Royal Palm Yacht & Country Club



484 South Maya Palm Drive | Boca Raton, Florida



Office (561) 368-6200

www.RoyalPalm.com

Interior Estate

NEW CONSTRUCTION BY J.P. DiMISA LUXURY HOMES, INC.

INTERIOR FEATURES

- Custom estate built by J.P. DiMisa Luxury Homes, Inc. with contemporary-modern finishes and detailing
- 12' stately double louvered solid wood door entry
- Grand foyer with raised wood panels, coffered ceiling, custom basket weave limestone floors with a leather finish, chandelier, and hardwood winding stairway with custom metal railing
- Volume ceilings, custom wood trim, engraved light switches, and oversized Moldings throughout
- Engineered wide plank white oak hardwood floors throughout the first and second floor; laid in a Herringbone pattern in kitchen and family room
- Living room with natural gas fireplace featuring linear quartz cladding, double tray ceiling, raised panel alcoves, and views of the pool
- Formal dining space with custom raised wood panel ceilings, chandelier, and mirrored feature wall open to the living room
- Office/Library has custom wood built-ins, wood floors, tray ceiling, and chandelier accessible by two sets of custom wood and glass French doors
- Club room with built-in bar and custom temperature controlled wine room with billiards and gaming space, and full views on the Grand Canal.
- Family Room opens to the kitchen with coffered ceilings, surround sound, and features a corner of fully collapsing sliding glass doors opening to the summer room
- Second-floor living room with a large open sitting/media space with French doors to the wrap around balcony
- First-floor VIP guest suite with kitchenette, sitting room, spacious bedroom, en-suite bathroom, and separate exterior entrance
- Elevator with raised wood paneling

GOURMET KITCHEN & LAUNDRY

- Spacious white gourmet kitchen outfitted with a large island and dining area with Cambria quartz counters, marble subway tile backsplash, 6-burner gas range with griddle, walk-in pantry, and Neff custom wood cabinets and lighting
- Top-of-the-line appliances include 48" Wolf gas range with double ovens, SubZero refrigerator/freezer, Miele integrated coffee bar, and two Miele dishwashers
- Massive center island with contrasting cabinets features an additional sink, Skara Brae quartz counter, and snack bar seating
- Separate dining space between the kitchen and family room for open and easy entertaining
- Deluxe first and second-floor laundry rooms with Electrolux washers and dryers, Walker Zanger tile, quartz counters, sinks, ironing boards, and garment racks

MASTER SUITE & BATH

- Spacious master suite with gallery entry, separate sitting room, covered balcony with water views, and equipped morning bar with SubZero refrigerator
- Master bath features a striking glass steam shower with rainfall head and body sprays, large dual vanities with marble accents, separate jetted tub, and two water closets with programmable electric commodes
- His & Her boutique-style walk-in closets with custom built-ins and luggage islands

EXTERIOR FEATURES

- Clean coastal architecture with copper gutters and complimenting exterior lanterns and lighting
- 131' on the Grand Canal with an equipped deep-water dock with extended protective seawall
- Custom designed heated pool/spa with salt water chlorination, sun shelf, dual fire bowls, and Hayward Omni-Logic remote controls
- Covered loggias with seating and dining area, wood ceilings, fireplace, ceiling fans, recessed lighting, and speakers
- Summer kitchen with bar seating, built-in Wolf BBQ, and SubZero beverage center
- Cabana bath and outdoor shower
- Tropical landscape, outdoor lighting, and irrigation professionally designed and installed affords great privacy
- Backyard features artificial turf yard
- Circular paver driveway and walkways

ADDITIONAL FEATURES

- Control 4 home automation system
- Ubiquiti Unifi wifi
- 5-zone air-conditioning with linear diffusers
- Impact glass windows and doors with tinted safety glass
- Crown Windsor Birchwood Slate roof tiles
- COR digital thermostats
- Icynene premium insulation
- Honeywell security system with alarm cameras, and motion sensors
- Whole house natural gas 70KW generator
- Dedicated central vacuum for each floor
- Natural gas appliances, BBQ, fire features, pool and water heaters, exterior lanterns and generator
- 3-car plus golf cart finished garages
- Cat 6 wiring throughout
- Ceiling mounted speakers with additional pre-wiring

Presented Exclusively By

David W. Roberts - Broker/Owner

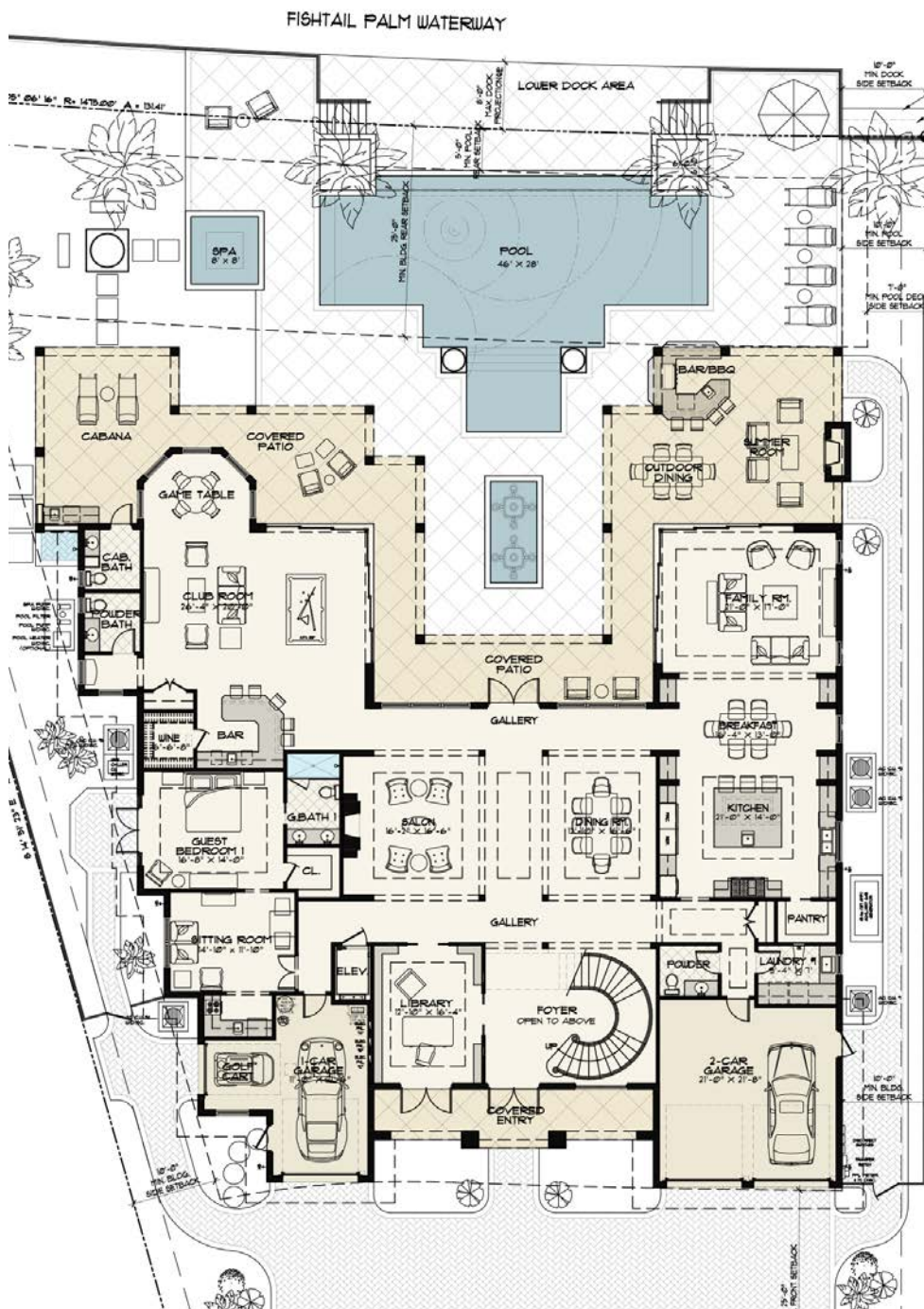


Office (561) 368-6200

www.RoyalPalm.com

The only real estate firm dedicated exclusively to Royal Palm Yacht & Country Club

484 South Maya Palm Drive



 Interior Estate J.P. DiMISA LUXURY HOMES, INC.	
BEDROOMS	6
BATHROOMS	6 FULL & 3 HALF
YEAR BUILT	2018
LOT SIZE	87' X 165' X 132' X 150'
LIVING SQ. FT.	9,083 SQ. FT.
TOTAL SQ. FT.	12,176 SQ. FT.
GARAGES	3 + GOLF CART

NOTE: All measurements, features and specifications are approximate. The accuracy of this information is subject to errors, omissions and changes. An architect should be contacted for actual measurements, features and specifications. Not intended to solicit another Broker's listing. Royal Palm Properties, Licensed Real Estate Brokers.