

Royal Palm Yacht & Country Club



249 Alexander Palm Road | Boca Raton, Florida



Office (561) 368-6200

P R O P E R T I E S

www.RoyalPalm.com

Waterfront Estate

NEW CONSTRUCTION BY SARKELA CORPORATION

INTERIOR FEATURES

- Italian-inspired contemporary 6-bedroom plus den waterfront home
- 12' custom solid Mahogany front door
- Grand foyer with custom Terzani lighting, and wood tread stairway with glass and stainless steel handrails
- DuChateau premium European oak hardwood floors with a hard-wax finish, volume ceilings, custom recessed baseboards, interior doors with reglet reveals, and architectural ceiling details throughout the home
- Great room features dramatic 24' marble slab feature with custom lighting, linear gas fireplace, and views of the pool and waterway
- Formal dining room with Terzani chandelier & walls sconces and designer wallpaper
- 200 bottle temperature-controlled glass wine room with custom racking system
- Family Room located off the kitchen with mounted TV and silver oak ceiling
- Office/Den with motorized shades, designer wall coverings, and dedicated full-bath
- Media Room with large mounted TV, gaming table, floating wet bar with storage, and waterway views
- Full-slab marble floor in the main powder room including floor to ceiling marble feature wall
- Second-floor beverage center with custom cabinets, sink, and U-line ice-maker
- Private guest suite with a spacious bedroom, en-suite bathroom, and balcony
- Italian Epoque furniture designed by Giuseppe Cicirelli
- Whisper-Ride Elevator



GOURMET KITCHEN & LAUNDRY

- Spacious modern kitchen with European marbles and limestone counters and tile, induction cooktop with integrated custom hood, pantry, and custom Duccini Milano Cabinetry with under-mount lighting
- SubZero refrigerator & freezer, Miele double oven, steam oven, speed cooker, warming drawers, and dishwashers
- Center contrasting island features snack bar seating, custom pendant lighting, sink and storage
- Separate breakfast dining space with surrounding views of the pool and summer room
- Deluxe first and second-floor laundry rooms: with Electrolux washers and dryers, designer tile floors, solid surface counters, garment racks, and storage



MASTER SUITE & BATH

- Spacious master suite with large seating area wrapped in views of the pool and waterway
- Her bath features Dornbracht fixtures, marble slab walls, walk-in shower with a rainfall showerhead, separate soaking tub, custom vanity, and Toto Neorest toilet
- Her closet is massive with luggage island, chandelier, and custom wood built-in storage
- His bath features Dornbracht fixtures, floor-to-ceiling absolute black honed granite, walk-in steamshower with a rainfall showerhead, custom vanity, and Kohler Numi toilet
- His closet is large with open storage and custom wardrobes and shoe storage

EXTERIOR FEATURES

- 100' water frontage on the Buccaneer Palm Waterway with Intracoastal and ocean access
- Deep-water 80' concrete dock with marble finish, power, and water
- The home, pool, deck and other structures supported by 185 auger cast piles drilled to the coral rock below
- Modern glass tile heated infinity-edge pool with fully submerged spa, large sun shelf, linear fire feature, and Aqualink controls
- Covered summer room with Cypress ceilings, linear gas fireplace, and TV lounge space
- Stainless steel gas BBQ with natural stone finishes, sink, and storage
- Diamond Zoysia grass yard and 6' mature hedges surround property lines
- Front sliding security gates and lockable pedestrian gates at side yards with premium Kynar finish
- Fully-marbled front face walls and columns
- Solid mahogany wood shutters and garage doors

ADDITIONAL FEATURES

- Smart house tablet control panels for the music, lights, cameras, window shades, security, and climate
- Security system with alarm, cameras, and motion sensors
- Custom Lutron lighting controls throughout interior and exterior landscape lighting
- Two 2-car air-conditioned garages (4 total) finished with tile floors and Gree split cooling units
- Hurricane resistant construction: Impact glass windows and doors and double strapped roof trusses
- Whole-house natural gas generator (48KW)
- 2 Navien condensing hot water heaters
- 5 AC-zones with Lennox Elite digital thermostats
- Natural gas to appliances, water heaters, fire features, BBQ, and generator
- Motorized Lutron shades throughout the home
- Central Vacuum

Presented Exclusively By

David W. Roberts - Broker/Owner



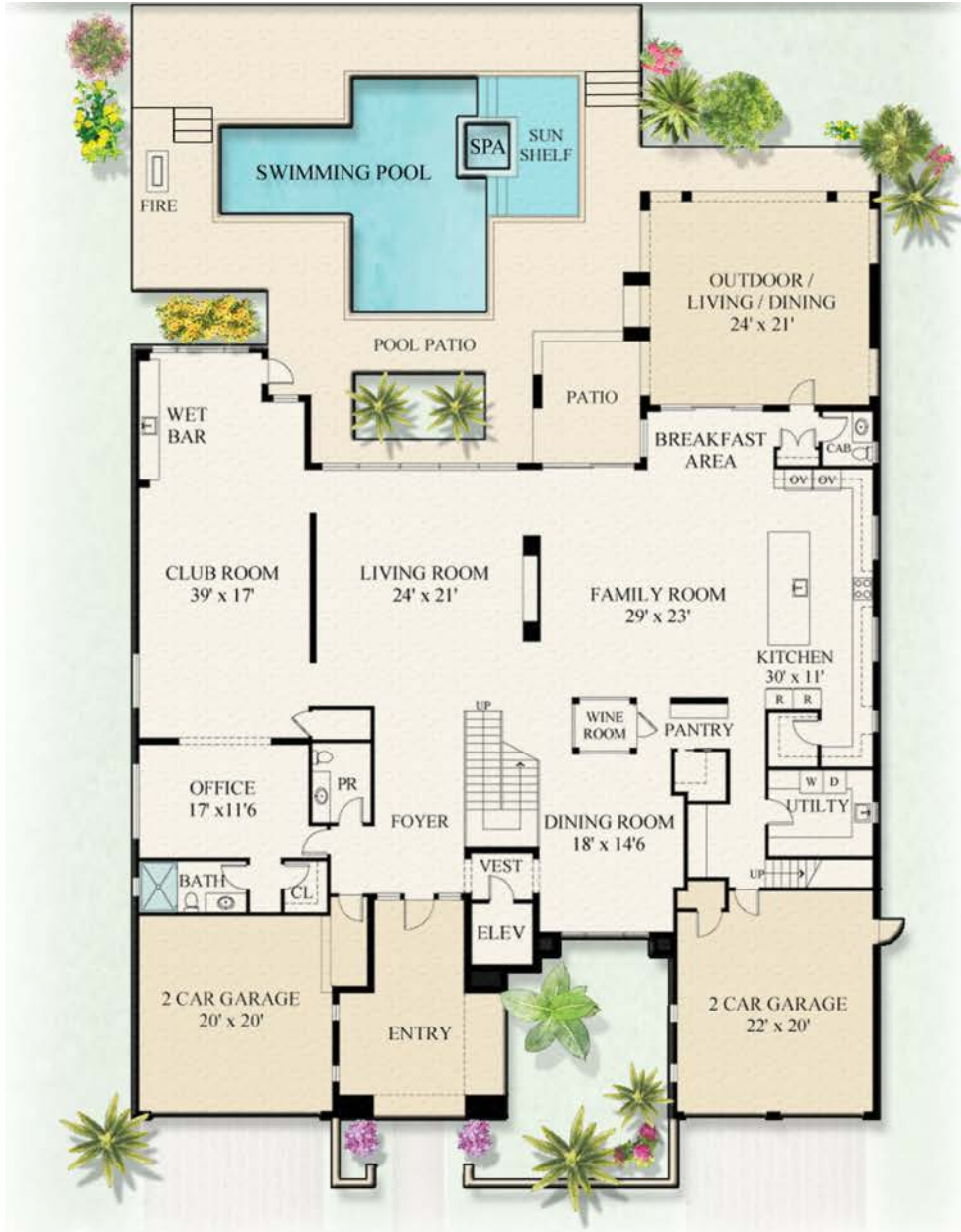
P R O P E R T I E S

Office (561) 368-6200

www.RoyalPalm.com


The only real estate firm dedicated exclusively to Royal Palm Yacht & Country Club

249 Alexander Palm Road



Second Floor



 Waterfront Estate SARKELA CORPORATION	
BEDROOMS	6 + DEN
BATHROOMS	8 FULL & 2 HALF
YEAR BUILT	2018
LOT SIZE	100' X 150' X 100' X 150'
LIVING SQ. FT.	8,815 SQ. FT.
TOTAL SQ. FT.	11,401 SQ. FT.
GARAGES	4

NOTE: All measurements, features and specifications are approximate. The accuracy of this information is subject to errors, omissions and changes. An architect should be contacted for actual measurements, features and specifications. Not intended to solicit another Broker's listing. Royal Palm Properties, Licensed Real Estate Brokers.