

Royal Palm Yacht & Country Club



2165 East Maya Palm Drive | Boca Raton, Florida



Office (561) 368-6200

P R O P E R T I E S

www.RoyalPalm.com

Interior Estate

SIGNATURE ESTATE BY SRD BUILDING CORP.

www.RoyalPalm.com

INTERIOR FEATURES

- Modern two-story grand Foyer entry with 10' pivot entry door, cove ceiling lighting, floating wood tread stairway with metal/glass railings and oak treads and handrail
- Volume ceilings with clean reglet designs and 24" x 48" porcelain tile and oak wood flooring throughout
- Formal dining room with custom chandelier and decorative ceiling detail
- Library/Office with custom wood built-ins, wood panel ceiling, large two-sided desk and pocket doors leading to the club room
- Club Room has a contemporary ceiling and wall details with fully equipped wood-paneled bar with honed stone countertops, 82" Samsung TV, refrigerator, ice maker and cabana bathroom
- Glass wine room with suspension racking system
- Formal Great Room with custom wood panel and mirror wall with floating shelves and cabinet, 82" Samsung TV and surrounding views of the pool
- Loft second floor Media Room with 65" Samsung TV and sliding doors opening to a large balcony
- Elevator with wood paneling and mirrors

GOURMET KITCHEN & LAUNDRY

- Polished elegant large open Gourmet Kitchen with hi-gloss veneer designer wood and acrylic cabinetry, custom hardware, porcelain countertops, double island with counter-height seating for 7 guests
- Wolf double wall oven and natural gas 5-burner cooktop with double oven, Thermador built-in refrigerator/freezer, and cooling drawers, Wolf warming drawers and dual Bosch dishwashers
- Breakfast area off the kitchen with views of the pool
- Deluxe second floor Laundry Room with custom built-in cabinets, Electrolux front loading washer/dryer, refrigerator, sink, ironing board, and garment rack

MASTER SUITE & BATH

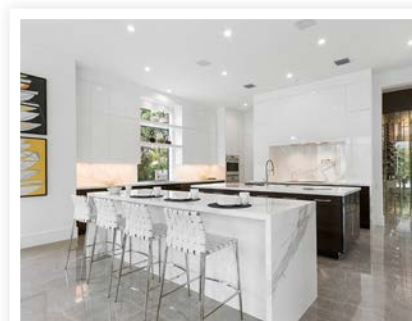
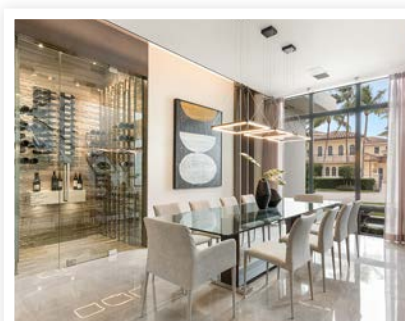
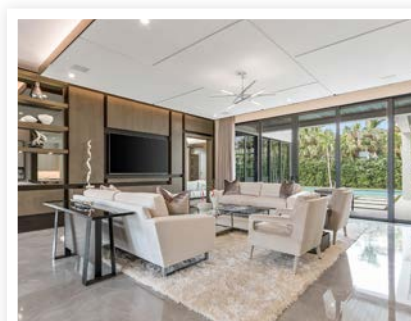
- Spacious second floor Master Suite with mounted Samsung TV, overhead speakers, and large sliding doors to the covered balcony
- Luxurious shared master bath with His & Her water closets and custom vanities with Quartz counters
- Elegant freestanding soaker tub, large frameless glass with rainfall showerhead and make-up vanity
- Large separate His & Her walk-in closets with custom built-ins and storage

EXTERIOR FEATURES

- Resort-style heated pool with large sun shelf, bench, fountain jets, spa and modern 24" concrete tile deck
- Summer Kitchen with bar seating, built-in Alfresco BBQ, refrigerator, sink, and Dekton stone countertops
- Multiple covered loggia seating and entertaining areas with 48" fire table
- Front entrance with 10' pivot metal and glass door and fountain with fire and water feature
- Gated circular driveway
- Professional exterior waterproofing at all door and window openings
- Landscape and irrigation professionally designed
- Premium artificial turf yard
- Gated pet yard with upgraded drainage

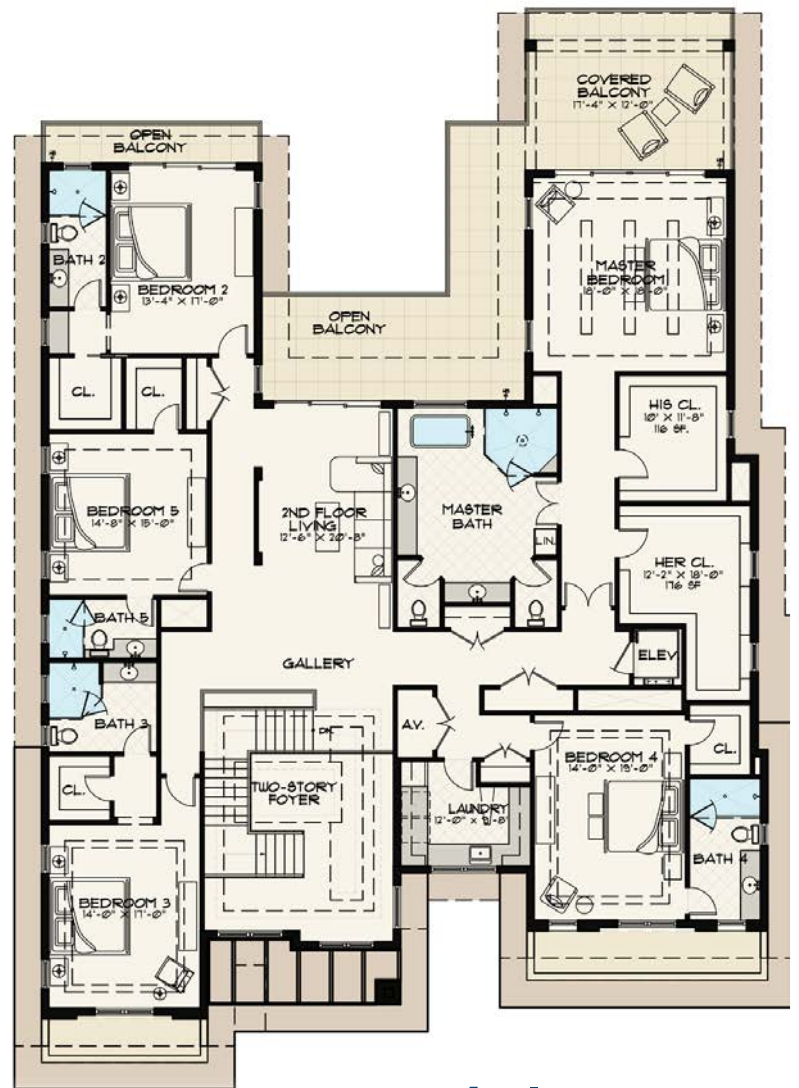
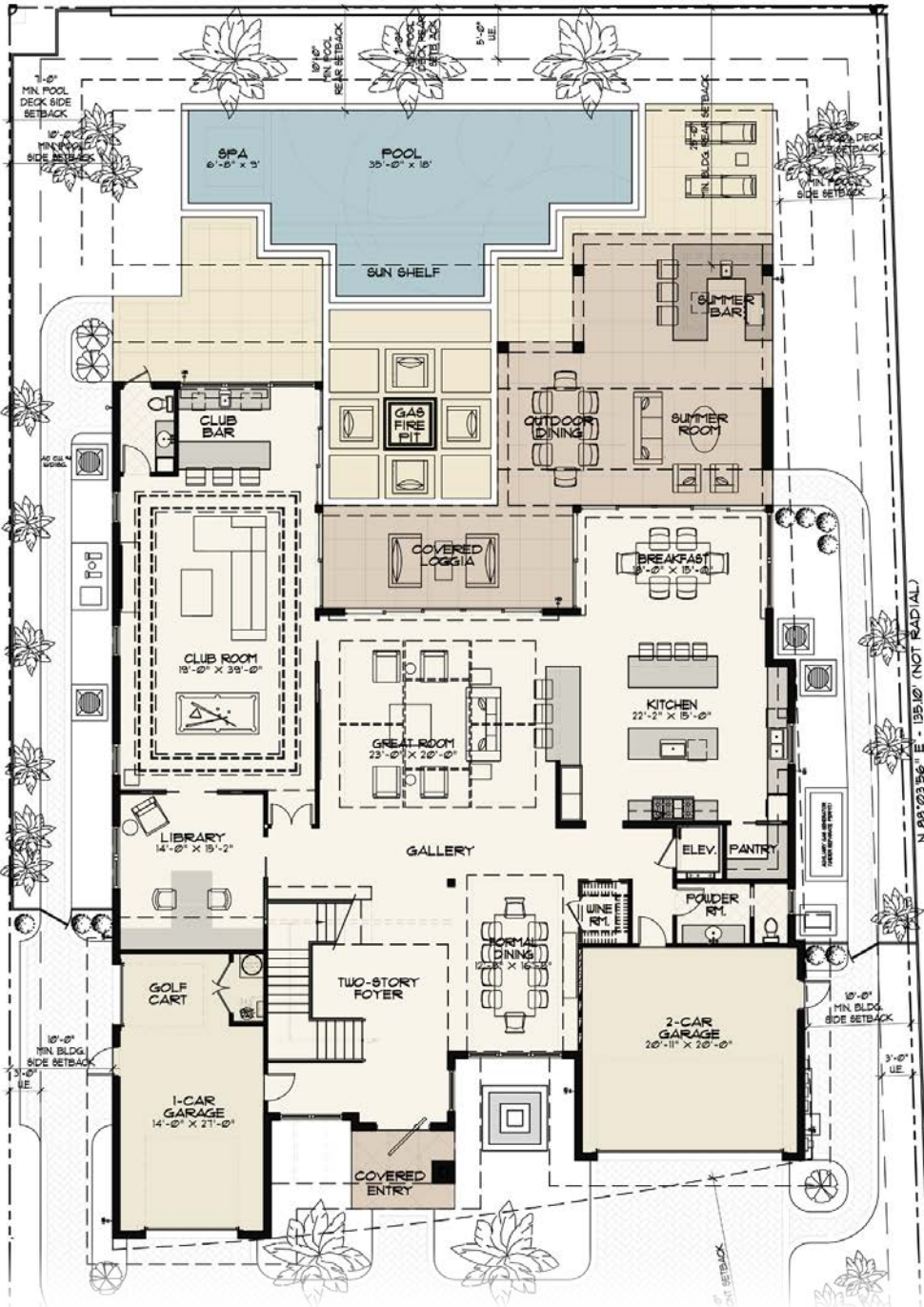
ADDITIONAL FEATURES

- Hurricane resistant home construction, including windows, exterior doors, and garage doors
- Exterior shell construction designed for 170 mph winds
- 3-car plus golf cart garage with finished tiled floors
- 4-Zone high-efficiency A/C with programmable quiet bath exhausts
- Natural gas installed for range, pool heater, BBQ, water heater, generator, fire table, and fire bowl
- Energy Smart upgraded open cell foam insulation air barrier sound-reducing insulation at all walls and floors
- Tinted and laminated impact energy loss reducing windows and doors
- Structurally superior slate cement roof tiles
- Vantage one-touch lighting system
- Crestron smart-home system with remote phone and tablet control for climate, lights, security, and more
- Sound system throughout the home
- Custom shutters and electric window shades in main living areas and master suite, club room, and Her bath
- Security cameras and alarm accessible by Crestron smart-home controls
- Security system with security screens, carbon monoxide, smoke, water detection, and heat sensors
- Whole-house natural gas generator
- Central vacuum



The only real estate firm dedicated exclusively to Royal Palm Yacht & Country Club

2165 East Maya Palm Drive



Second Floor



INTERIOR ESTATE
SIGNATURE ESTATE BY SRD BUILDING CORP.

BEDROOMS	5
BATHROOMS	5.2
YEAR BUILT	2018
LOT SIZE	89' X 146' X 84' X 135'
LIVING SQ. FT.	7,040 SQ. FT.
TOTAL SQ. FT.	9,050 SQ. FT.
GARAGES	3 + GOLF CART

NOTE: All measurements, features and specifications are approximate. The accuracy of this information is subject to errors, omissions and changes. An architect should be contacted for actual measurements, features and specifications. Not intended to solicit another Broker's listing. Royal Palm Properties, Licensed Real Estate Brokers.