

Royal Palm Yacht & Country Club



2148 West Maya Palm Drive | Boca Raton, Florida



Office (561) 368-6200

www.RoyalPalm.com

Interior Estate

INTERIOR FEATURES

- Modern single story home with 4 bedrooms and office, with a very desirable split floor plan
- Steel front door
- Bright foyer opens to a stunning gallery hallway
- Volume ceilings throughout including 20ft+ ceiling in the living room
- Low maintenance polished concrete flooring throughout
- Oversized trim, 8' doors, and solid brass door hardware
- Living room is airy and bright with soaring ceilings, equipped bar, and large sliders opening to the pool
- Wet bar with Dekton counters, U-line wine refrigerator, ice maker, sink, and wood cabinetry
- Dining area located near the kitchen with custom chandelier and wrapped in pool views
- Guest bedrooms have ensuite baths and walk-in closets

GOURMET KITCHEN & LAUNDRY

- Spacious kitchen with large center island, Dekton counters, white glass tile backsplash, sleek Wolf feature hood, and walk-in pantry
- Center island with waterfall edge, sink, and breakfast bar seating
- Appliances include SubZero refrigerator/freezer, Wolf dual wall-mounted ovens with warming drawer, Wolf 5-burner gas range cooktop, and Bosch dishwasher
- Deluxe laundry room with Maytag washer/dryer, marble counters, sink, garment rack, ironing board, and wood cabinetry

MASTER SUITE & BATH

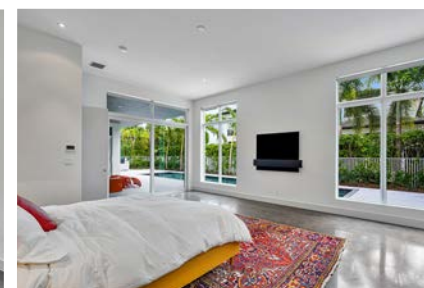
- Spacious master suite with vestibule entrance is bathed in natural light with seating area and sliders opening to the covered terrace
- Master bath features marble slab floors, walls, and counters, His & Her vanities with make-up area, glass-walled walk-in shower, Toto air bath, and His & Her private water closets (one with Toto Neorest commode with built-in bidet)
- Massive master closet with custom wood built-ins (could be divided into His & Her)

EXTERIOR FEATURES

- Stunning modern home with flat roof design
- Saltwater lap pool with gorgeous marble and mosaic tile
- Tropical landscaping and irrigation professionally designed and installed
- Gated yard and walkways
- Covered terrace with large seating/dining area and exterior speakers
- Summer kitchen with built-in DSC BBQ, Dekton counters, refrigerator, sink, and storage
- Concrete dual driveways with large privacy wall

ADDITIONAL FEATURES

- Located on a quiet street within walking distance to both the Yacht and Golf Club
- Impact glass windows and doors
- Linear air diffusers in the living room
- 2-zone air conditioning with Carrier digital thermostats and damper system
- Security system with alarm and surveillance cameras
- Natural gas to appliances, summer kitchen, and water heaters
- Two central vacuums service the entire home
- Two tankless gas hot water heaters



Presented Exclusively By

David W. Roberts - Broker/Owner

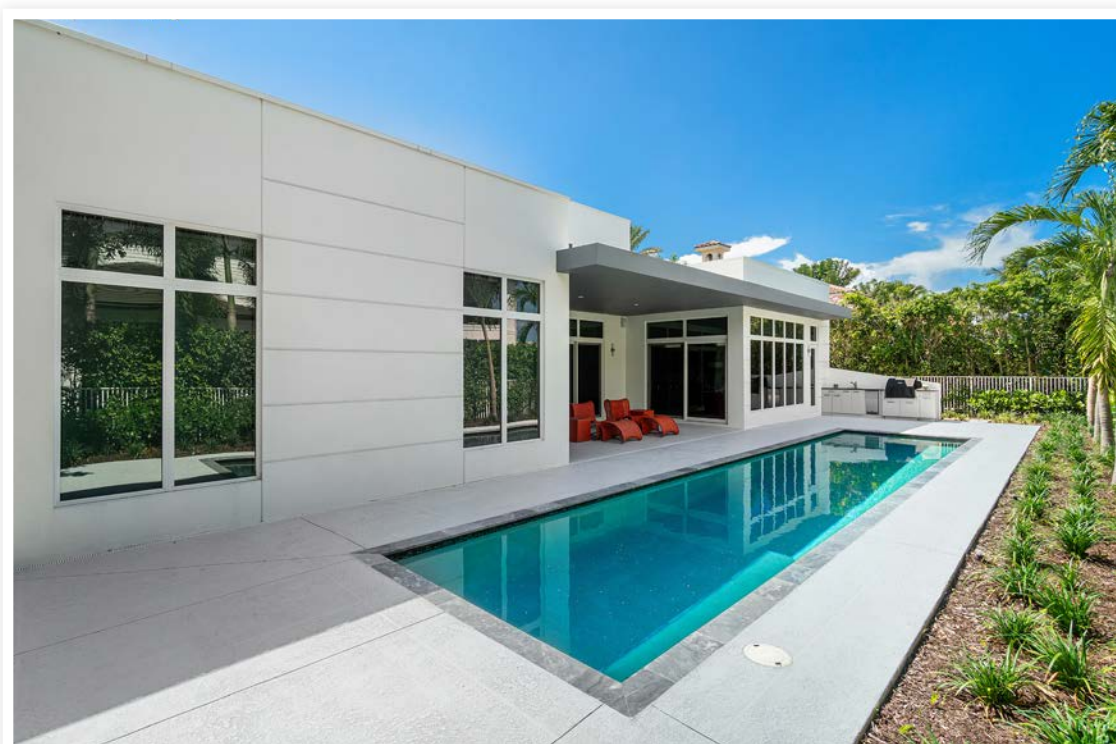
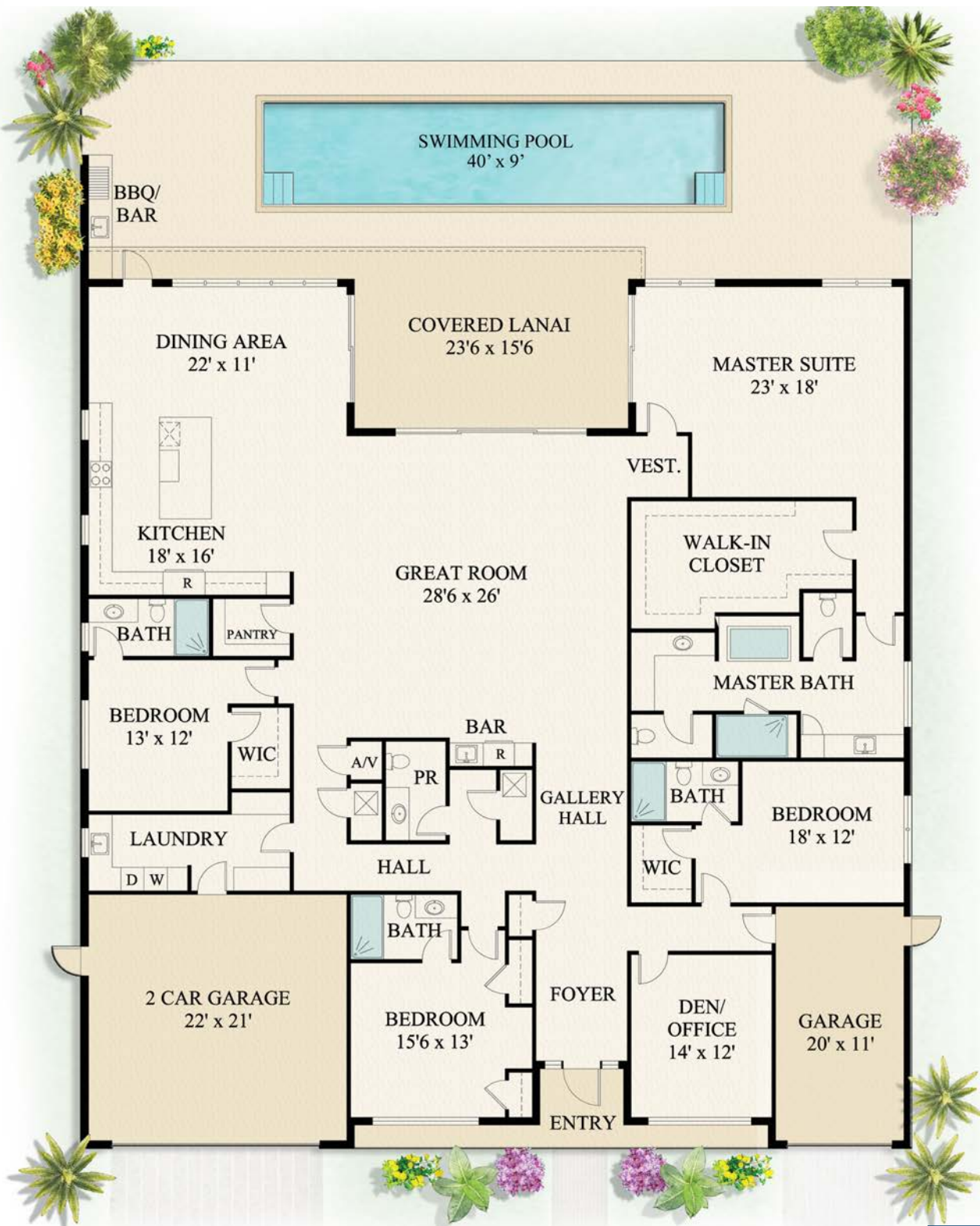



Office (561) 368-6200

www.RoyalPalm.com

The only real estate firm dedicated exclusively to Royal Palm Yacht & Country Club

2148 West Maya Palm Drive



 Interior Estate	
BEDROOMS	4 + OFFICE
BATHROOMS	4 FULL & 1 HALF
YEAR BUILT	2015
LOT SIZE	92' X 125' X 91' X 125'
LIVING SQ. FT.	4,186 SQ. FT.
TOTAL SQ. FT.	5,257 SQ. FT.
GARAGES	3

NOTE: All measurements, features and specifications are approximate. The accuracy of this information is subject to errors, omissions and changes. An architect should be contacted for actual measurements, features and specifications. Not intended to solicit another Broker's listing. Royal Palm Properties, Licensed Real Estate Brokers.