

Royal Palm Yacht & Country Club



2249 West Maya Palm Drive | Boca Raton, Florida



Office (561) 368-6200

P R O P E R T I E S

www.RoyalPalm.com

Golf Course Estate

NEW CONSTRUCTION BY GRECO BUILDERS INC.

INTERIOR FEATURES

- Elegant 5-bedroom contemporary sanctuary with traditional architectural details
- Covered entry with stately custom wood and glass doors with sidelights
- 24' grand foyer with rotunda dome ceiling, elegant crystal chandelier, black and white marble inlay, wrapping marble stairway and wrought iron banister
- Marble flooring throughout 1st floor and 2nd floors
- Extensive hand-carved millwork, architectural details, and oversized trim throughout the home
- Living room/Great room with double-sided fireplace, beautiful ceiling details, and an exceptional view of the pool and golf course
- Formal dining room with herringbone natural wood floors, designer chandelier, and wine storage
- Library/Clubroom with designer wall treatments, custom-built beverage center, wood built-ins, and ensuite cabana bath
- Large family room opens to the kitchen with accordion glass doors for total indoor/outdoor living
- Upstairs loft living room with wood-planked ceilings, surround sound speakers, and doors leading to a massive covered marble balcony (5th Bedroom)
- Private guest suite on the first floor with kitchenette, ensuite bath, and walk-in closet
- Glass-door elevator

GOURMET KITCHEN & LAUNDRY

- Spacious white gourmet kitchen with full-service butler's pantry, natural hardwood cabinets, stone counters, marble backsplash, and dual islands
- Dual islands with matching counters, snack-bar seating, sink, power, and storage
- Top-of-the-line appliances include SubZero refrigerator, wine cooler, and 4 freezer drawers, Wolf 6-burner plus grill and griddle range with dual ovens, Wolf coffee bar, and two Bosch dishwashers
- Breakfast dining area wrapped in pool and golf views
- Deluxe laundry rooms on the first and second floors with Maytag washers and dryers, ironing boards, sinks, garment racks, and storage

MASTER SUITE & BATH

- Luxurious and inviting second-floor master retreat with marble floors, sitting room, separate his/her baths & closets, and access to both a shared and private balcony with spectacular views of the backyard and golf course
- Her bath is adorned in marble with custom vanity and makeup area, soaking tub, glass-enclosed shower, and private water closet with bidet
- His bath has a custom wood vanity and large glass walk-in shower

EXTERIOR FEATURES

- 104' of golf course frontage and vistas in close proximity to the Royal Palm Yacht Club
- Heated circular infinity-edge spa and pool (30'x15') with Diamond Brite finish, water sprays, sun shelf, and beautiful glass tile accents
- Summer kitchen with Alfresco BBQ and bar with stone counters and stainless-steel cabinet storage
- Covered and open seating and dining spaces
- Outdoor shower
- Tropical landscaping and lighting professionally designed and installed
- 24" honed marble pool and patio deck, and second-story terraces
- Interlocking brick paver circular driveway and gated walkways
- Dual 2-car garages with overhead lifts and finished floors (with lifts can store up to 8-cars)
- Premium low-maintenance artificial turf in front yard and backyard

ADDITIONAL FEATURES

- Smart house Crestron control panels for the pool, music, lights, climate, security and more
- Crestron upgraded lighting system
- 4-zone air conditioning
- 2 Rinnai instant hot water systems
- Whole-house water purification system
- Dual pool filters for the pool and spa; air blower and Haywood gas pool heater
- Impact glass windows and doors
- Concrete tile roof
- Whole-house natural gas generator
- Central vacuum



Presented Exclusively By

David W. Roberts - Broker/Owner



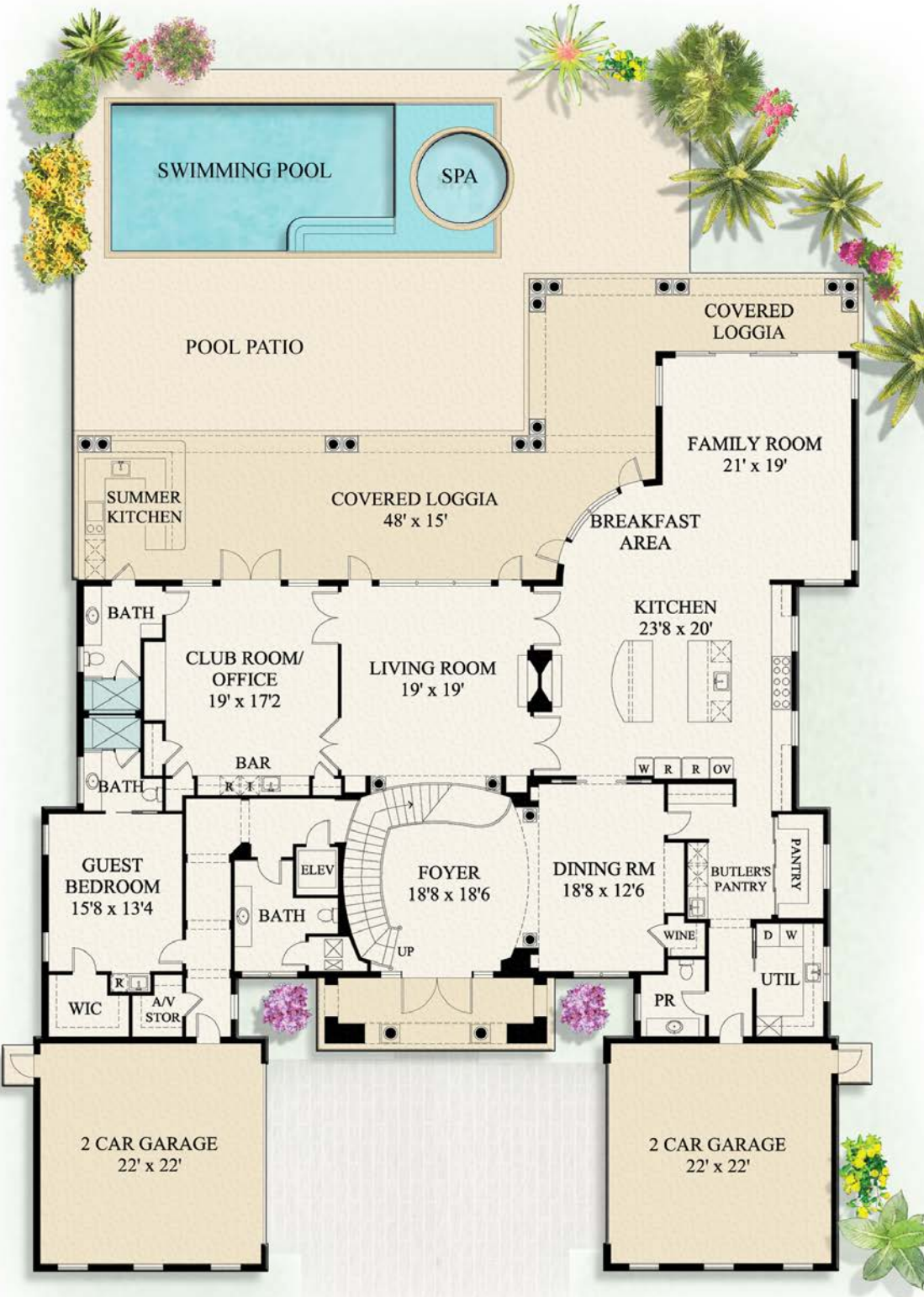
P R O P E R T I E S


Office (561) 368-6200

www.RoyalPalm.com

The only real estate firm dedicated exclusively to Royal Palm Yacht & Country Club

2249 West Maya Palm Drive



 Golf Course Estate <small>NEW CONSTRUCTION BY GRECO BUILDERS INC.</small>	
BEDROOMS	5
BATHROOMS	7 FULL & 2 HALF
YEAR BUILT	2019
LOT SIZE	100' X 150' X 104' X 150'
LIVING SQ. FT.	7,112 SQ. FT.
TOTAL SQ. FT.	10,899 SQ. FT.
GARAGES	4

NOTE: All measurements, features and specifications are approximate. The accuracy of this information is subject to errors, omissions and changes. An architect should be contacted for actual measurements, features and specifications. Not intended to solicit another Broker's listing. Royal Palm Properties, Licensed Real Estate Brokers.